

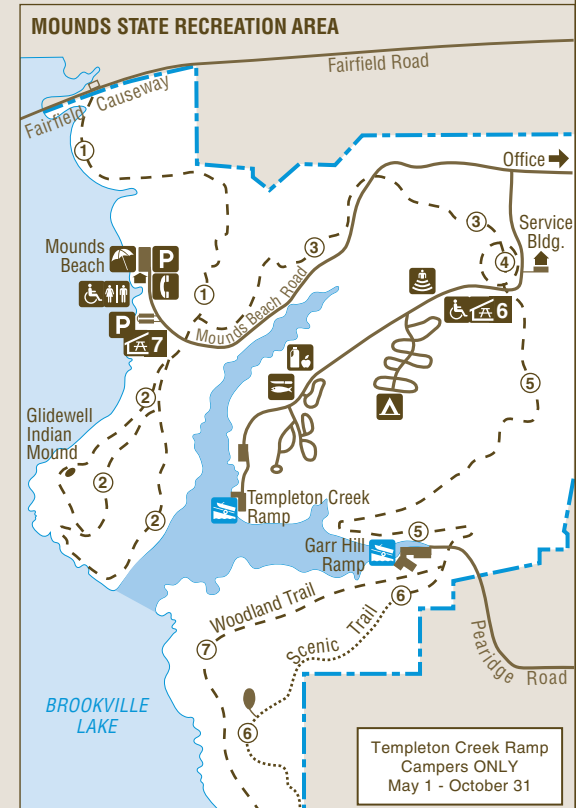
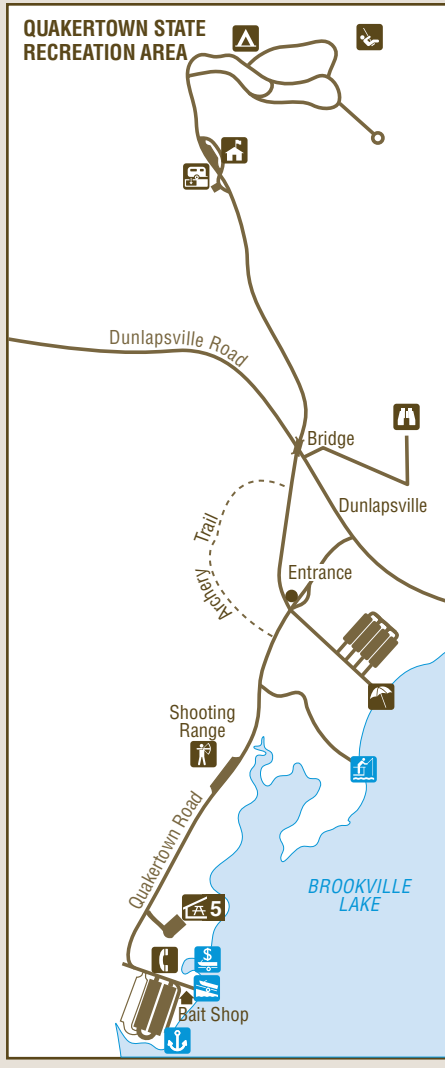
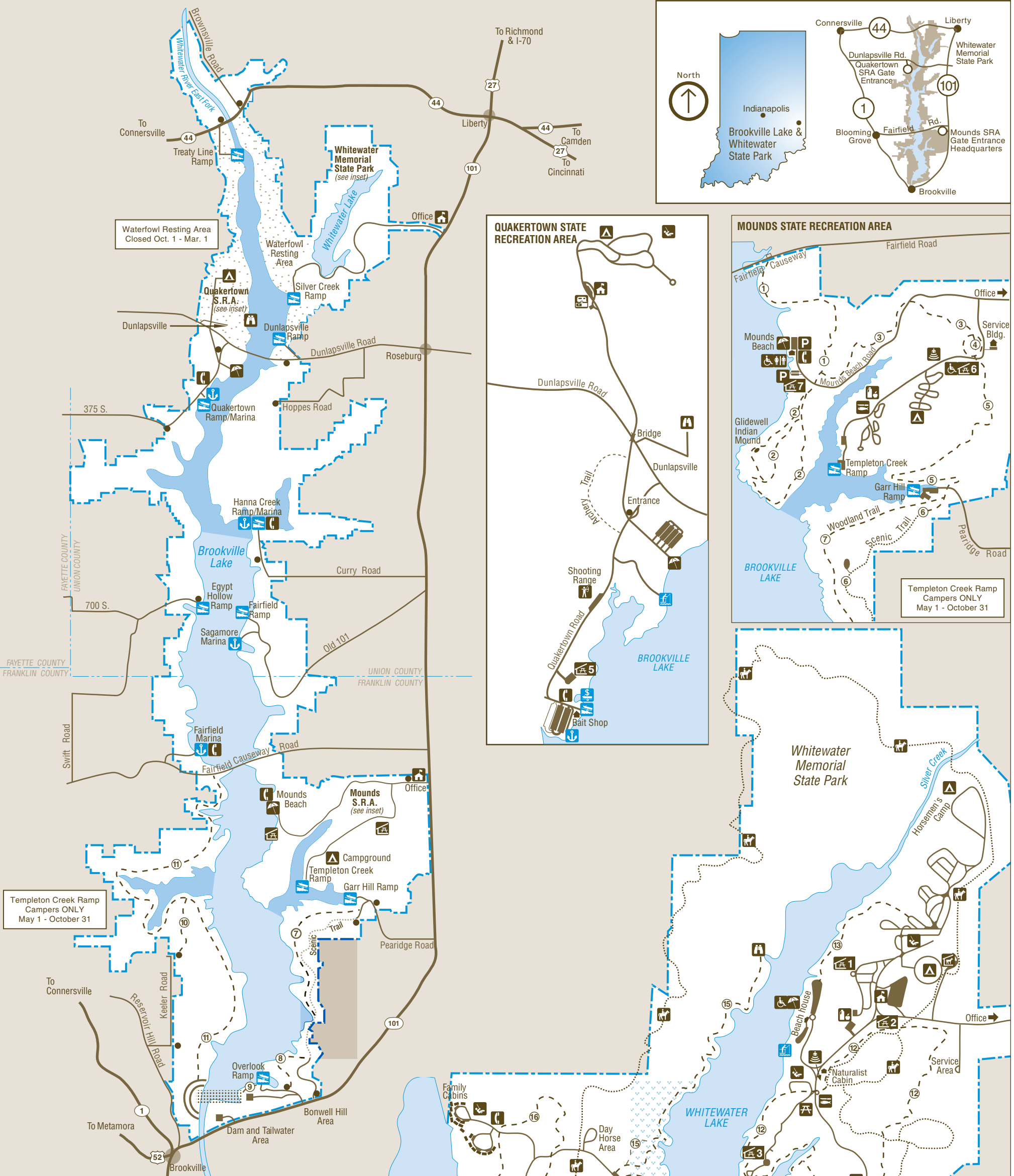
BROOKVILLE LAKE and WHITEWATER MEMORIAL STATE PARK

Brookville Lake

14108 State Road 101 • Brookville, IN 47012 • (765) 647-2657
11,185 Acres • 5,260 Acre Lake • Established 1975

Whitewater Memorial State Park

1418 S. State Road 101 • Liberty, IN 47353 • (765) 458-5565
1,710 Acres • 180 Acre Lake • Established 1949



Templeton Creek Ramp
Campers ONLY
May 1 - October 31

Templeton Creek Ramp
Campers ONLY
May 1 - October 31

LEGEND			
	Boundary		Accessible
	Road		Campground
	Hiking Trail		Playground
	Horse Trail		Camp Store
	Hornbeam NP		Phone
	Safety Zone		Picnic Shelter
	Idle Zone <small>No Wake, No Wash</small>		Amphitheater
	Waterfowl Rest Area		Fish Cleaning
	Hunter Sign-In		Horse Stable
	Point of Interest		Archery Range
	Boat Rental		Beach
	Boat Launch		Information/Office
	Fishing Pier		Restrooms
	Marina		Picnic Areas
	Wildlife Viewing		Dump Station

BROOKVILLE LAKE TRAIL TABLE			
#	TRAIL NAME	INTENSITY	MILEAGE
1	Fairfield	Moderate	1.5
2	Glidewell	Moderate	4.5 / 2
3	Templeton Creek	Moderate	2
4	Wildlife Wander	Easy	.7
5	Garr Hill	Moderate	1.8
6	Scenic	Moderate	3.25
7	Woodland	Moderate	5
8	Eagle	Moderate	2
9	Bonwell	Moderate	1.5
10	Midway	Moderate	2.2
11	Wolf Creek	Rugged	16.5

WHITEWATER MEMORIAL TRAIL TABLE			
#	TRAIL NAME	INTENSITY	MILEAGE
12	Memorial Loop	Moderate	2.5
13	Cattail Alley	Moderate	1
14	Red Springs Loop	Rugged	1.2
15	Lakeshore	Moderate	2.7 / .5
16	Veterans Vista	Moderate	2
	Horse Trail		9

SHELTERHOUSES	
#	WHITEWATER MEM. SP
1	North
2	Poplar
3	South
4	Silver Creek
# BROOKVILLE LAKE	
5	Quakertown
6	Mounds Campground
7	Mounds Beach

CARRY IN CARRY OUT
Please carry out all trash you produce in order to keep your park clean and beautiful for others to enjoy.

Printed on Recycled Paper

RECYCLE
Place used beverage cans in the park's marked recycling containers. Thank you.

Please let wild animals remain wild. Feeding deer is prohibited. Feeding of wild animals can result in harm to both animals and people. Animals who depend on handouts become a nuisance to visitors and a danger to themselves. Please lock up all food and coolers inside cars or campers. Roll up car windows tightly.

PLEASE STAY ON MARKED TRAILS.
HORSES MUST STAY ON DESIGNATED HORSE TRAILS AT ALL TIMES.

A large loop trail traverses the edge of the property or Horsemen's Campground. Saddle barn trail is exclusively for saddle barn patrons

Bridle Trails 9 miles

This trail offers a spectacular view of Brookville Lake, winding through fields and forests in the Silver Creek and Family Cabin areas.

Veterans Vista Loop 2 miles Moderate

The short loop and longest trail starts and ends at Hornbeam Nature Preserve parking lot, traversing hills and valleys of beautiful hardwoods along Whitewater Lake's western shore. Half-mile short loop is at beginning-watch for wooden signs. Long trail turns around at wooden steps and observation deck.

Lakeshore 2.7 miles Moderate

Wonderful trail for spring wildflowers. Wondrous trail for spring wildflowers. Wondrous trail for spring wildflowers.

Red Springs Loop 12 miles Rugged

Accesses family campground to beach area of Whitewater Lake. Northwest end is marked by acres of cattails, providing habitat for many species of waterfowl and other birds.

Cattail Alley 1 mile Moderate

Easily accessed from many different locations. Travels eastern shore of Whitewater Lake through variety of forest types.

Memorial 2.5 miles Moderate

Primitive trail traversing hills and ravines on west side of Brookville Lake, crossing no public roads or buildings. Ends at Fairfield Causeway. Beautiful lake views in spring and fall. To pick up Fairfield Trail, continue back to east side.

Wolf Creek 16.5 miles Rugged

TRAIL & DESCRIPTION DISTANCE DIFFICULTY

RULES AND REGULATIONS

- No one shall injure or damage any structure, rock, tree, flower, bird or wild animal. Do NOT gather limbs, brush or trees (dead or alive) for firewood; they rebuild the natural humus.
- Firearms-Whitewater SP:** Except lawfully possessed handguns, any firearm, BB gun, air gun, CO₂ gun, bow and arrow, paint gun or spear gun must be unloaded or un-nocked and stored in a case or locked within a vehicle, except when an owner is participating in an activity authorized by written permit. **Brookville Lake:** Handguns are prohibited. Any firearm, BB gun, air gun, CO₂ gun, bow and arrow, paint gun or spear gun must be unloaded or un-nocked and stored in a case or locked within a vehicle, except in accordance with the terms of a valid one-day hunting permit for a specified date. A hunting map is at stateparks.IN.gov.
- No person shall conduct or participate in a fishing tournament on a reservoir property administered by the Division of State Parks except under a license.
- No person shall launch, dock, or moor a watercraft or other floating device, except during approved periods and at sites designated by the department for those purposes. No person shall leave watercraft unattended in a courtesy dock.
- A person who possesses a pet must attend it at all times and keep the animal caged or on a leash no more than 6 feet long, except when used for the lawful pursuit of wild animals.
- Vending or advertising without DNR permission is prohibited.
- Camping is permitted only in the campground. Youth groups must be under adult supervision. No lakeshore camping.
- Fires shall be built only in designated places.
- Please comply with the Carry In/Carry Out trash policy in all day-use areas. Overnight guests must put waste in receptacles provided for that purpose.
- Motorists shall observe posted speed limits and park only in designated areas.
- Swimming is limited to places/time designated by the DNR.

DNR PROPERTIES NEARBY

- Whitewater Memorial State Park**-boating, boat ramps, boat rental, bridle trails, cabins, camping, seasonal interpretive center, picnicking, saddle barn, dump station, fishing, fishing pier, youth tent areas, hiking trails, seasonal interpretation
- Whitewater Canal State Historic Site**-Discover how this 1840s feat of engineering changed Indiana from a pioneer outpost to the "Crossroads of America."
- Shrader-Weaver Nature Preserve**-Hiking trails, parking

Pick up an Indiana Recreation Guide for more information.

TRAIL & DESCRIPTION	DISTANCE	DIFFICULTY
Fairfield	1.5 miles	Moderate
Extends from southwest end of Fairfield Causeway to Mounds Beach Road, traveling by lakeshore through old pine plantation and crop fields.		
Glidewell	6.5 miles	Moderate
Has a long loop (4.5 miles) and short loop (2 miles) past a 2,000-year-old Native American mound.		
Templeton Creek	2 miles	Moderate
Parallels Mounds Beach Road then crosses Templeton Creek and up to the Wildlife Wander Trail.		
Wildlife Wander	7 miles	Easy
Self-guided short loop through mature woods. Brochures available by trail sign.		
Garr Hill	1.8 miles	Moderate
Goes through crop fields and woods to the Garr Hill Boat Ramp.		
Scenic	3.25 miles	Moderate
Great for bicycle riding and rollerblading. Goes from Garr Hill to Scenic Vista.		
Woodland	5 miles	Moderate
Wooded alternative parallel to paved Scenic Trail.		
Eagle	2 miles	Moderate
Travels through beautiful mature woods to Bonwell Ramp road. To continue on Bonwell Trail, cross road and walk to far corner of parking lot.		
Bonwell	1.5 miles	Moderate
Connects Bonwell to top of dam. To continue Adena Loop, cross the dam to Wolf Creek Trail.		
Midway	2.2 miles	Moderate
Easy access to Wolf Creek Trail. Access trailhead at small parking lot at end of Keeler Road.		

DESCRIPTIONS OF TRAILS

HORSES—At Whitewater SP, seasonal guided trail rides available from concessionaire saddle barn. Nine miles of bridle trails available for day horse riders or horse campers.

INTERPRETIVE NATURALIST SERVICE—Hikes, talks and other fun programs available from Memorial Day to Labor Day. Schedules by request at state property or at InterpretiveServices.IN.gov.

SHOOTING RANGE—At Quakerstown SRA, open April 1-December 1. December 2-March 31 by appointment only. Call Brookville or Whitewater office to make an appointment.

CENTRAL RESERVATION SYSTEM

Reservations for all types of camping, family cabins, and shelters at state parks, reservoirs and forests can be made online or by calling toll-free. Call: **1-866-6campIN** (1-866-622-6746) Online: **camp.IN.gov**

Reservations for the Indiana State Park Inns and Inn-operated cabins can be made online or by phone. Call: **1-877-lodges1** (1-877-563-4371) Online: **IndianalInns.com**

FOR MORE INFORMATION

Write: **Brookville Lake**
14108 State Road 101
Brookville, IN 47012
Call: (765) 647-2657
Online: stateparks.IN.gov/2961.htm
Write: **Whitewater Memorial State Park**
1418 S. State Road 101
Liberty, IN 47353
Call: (765) 458-5565
Online: stateparks.IN.gov/2962.htm

SPECIAL NOTE

Receipts from admission and service charges are used to help defray the operation and maintenance costs of the lake. List of fees available in the main office.

CARRY IN CARRY OUT TRASH Please carry out all trash you produce in order to keep your park clean and beautiful for others to enjoy!

See everything Indiana State Parks has to offer at stateparks.IN.gov.

Subscribe to Outdoor Indiana magazine today, Visit OutdoorIndiana.org or call (317) 233-3046.

The programs, services, facilities, and activities of the Indiana Department of Natural Resources are available to everyone. DNR prohibits discrimination on the basis of race, color, national origin, age, sex, or disability. If you believe that you have been discriminated against in any program, activity, or facility as described above, or if you desire further information please write to: Department of Natural Resources, Executive Office, 402 W. Washington Street, W256, Indianapolis, IN 46204, (317) 232-4020.

HUNTING—Upland game and waterfowl available on Brookville property during open seasons. Indiana Hunting license required.

State fishing license required.

bluetail, crappie, and catfish. Whitewater Lake: striped bass, smallmouth bass, largemouth bass, muskellunge, Walleye, muskellunge, through the Central Reservation System.

Quakerstown SRA, and four at Whitewater SP. Reserve houses are available: two at Mounds SRA, one at Quakerstown SRA, and four at Whitewater SP. Reserve Most have tables and toilet facilities. Seven shelter **PICNIC AREAS**—Available in a number of areas. fuel, ship store, boat rental and restaurant.

Hanna Creek has 76 slips for sailboats only. Quakerstown buoys and slips, as well as on-water fuel and ice. **MARINAS**—Fairfield has seasonal mooring in both ranging from easy to rugged.

HIKING—More than 50 miles of hiking trails to rent. Reserve through the Central Reservation System. the others do not. All are non-smoking. Must be age 21 accessible; the others are not. Two cabins allow pets; 14 consecutive nights. Three cabins are handicapped. Maximum six persons per cabin. Occupancy limited to most clean and leave ready for next occupants. Renter at Whitewater SP. Guests furnish linens. Renter **MODERN FAMILY CABINS**—Available year-round through the Central Reservation System. Occupancy limited to 14 consecutive nights. Reserve sewage hookups) are available at the Mounds SRA. Whitewater SP. Full hookup sites (electric, water and and non-electric horseman's camping are available at Quakerstown SRA and Whitewater SP. Non-electric, youth potable water and dump stations at Mounds SRA, **CAMPING**—Campgrounds with modern sites, canoe, rowboat, and paddle boat rentals available. Whitewater Lake: Trolling-motor use only; seasonal pontoon rentals available through private concessionaire. and large areas of idle zone. Run-about and **BOATING**—Brookville Lake: Unlimited horsepower boat. All ramps have picnicking and toilet facilities. smaller fishing boats to large for almost any pleasure Lake has one. Ramps range from one-lane for **BOAT RAMPS**—Brookville Lake has 10; Whitewater modern bathhouses with dressing facilities and restrooms. hours Memorial Day through Labor Day. Beaches have **BEACHES**—Swimming available at Mounds SRA, Quakerstown SRA and Whitewater SP during open

ACTIVITIES AND FACILITIES

DNR Indiana Department of Natural Resources

INDIANA

BROOKVILLE LAKE & WHITEWATER MEMORIAL STATE PARK

stateparks.IN.gov

Brookville Lake provides flood control in the Whitewater Valley and helps reduce flood flows in the Ohio River. The lake also was developed for fish and wildlife, recreation, and municipal and industrial water supply. The lake is in Franklin and Union counties in southeastern Indiana on the east fork of the Whitewater River.

Whitewater Memorial State Park was established in 1949 to honor those who served in World War II. Fayette, Franklin, Union and Wayne counties acquired the initial acreage, which includes wooded rolling hills; steep ridges and ravines; level, open fields; and a manmade lake. The park's Hornbeam Nature Preserve includes an unusually high number of hornbeam and hop hornbeam trees. In spring, the forest is covered with wildflowers.

© 12/2017 Indiana Department of Natural Resources